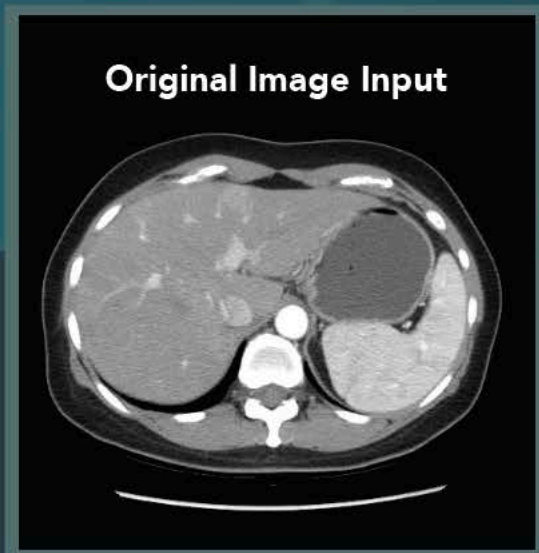


ClariACE

World's 1st AI-Powered Iodine Contrast Enhancing Solution

ClariACE is the World's 1st AI-powered Augmented Contrast Enhancing solution for low-dose CECT (contrast-enhanced computed tomography) images. Our powerful pre-trained deep learning model enables a selective boost in contrast agent components in CT images.



KEY FEATURES

- ✓ Clearly and selectively enhances the contrast of the iodine without increasing noise
- ✓ Users can directly set the boost ratio of the contrast to achieve optimal and customized image quality
- ✓ Vendor agnostic regardless of iodine contrast manufacturer, CT scanner, and scanned conditions, making it easy to integrate with your current systems
- ✓ Performance validated for low-dose CT images and if CECT does not have enough image contrast for several reasons, one being obese patients

HOW DOES IT WORK?

ClariACE is a software device intended for networking, communication, processing and enhancement of CECT images in DICOM format regardless of the manufacturer and model of CT scanner as well as iodine contrast agent. ClariACE improves the quality of contrast enhanced CT images to optimize contrast medium use.



CONTRAST COMPARISON: ORIGINAL VS CLARIACE BOOSTED



CONTRAST AGENT

- Contrast enhanced CT scans that are utilized in the diagnosis of various diseases cannot avoid the use of contrast agents, despite the fact that contrast agents have a variety of side effects.
- Due to negative side effects, iodine doses should be reduced as much as possible in contrast enhanced CTs.
- On the other hand, if the contrast agent dose is reduced in contrast enhanced CT scans, there is a risk of reduced accuracy of patient diagnosis due to less image contrast between the lesion and tissue.
- For this reason, the conflicting relationship between patient safety and accurate diagnosis has remained a dilemma for CT imaging. ClariACE was invented to overcome such a dilemma.

Clariπ Inc.
AI MEDICAL IMAGING SOLUTIONS

ClariPi provides innovative solutions to solve the problems in the medical imaging field through the convergence of big data and intelligent image processing technologies. Our solutions help imaging experts make confident decisions with clearer information and more convenient decision guidance.

Headquarter

Phone +82-2-741-3014

Fax +82-2-743-3014

Email claripi@claripi.com

Location Seoul, Republic of Korea

USA Office

Phone +1-248-930-4204

Email harryhp3014@claripi.com

Web www.claripi.com

Location Detroit, USA

